



CIDB
MALAYSIA



UPDATES ON IMPORT MECHANISM FOR IRON AND STEEL PRODUCTS

INTRODUCTION

- INTRODUCTION
- IMPLEMENTATION OF MANDATORY STANDARDS
- STRENGTHEN IMPORTATION PROCESS
 - ABOLISH TCOA
 - STREAMLINE COA PROCESS
 - FULL TYPE TESTS
 - REVIEW TARIFF LINES CONSTRUCTION/NON CONSTRUCTION
- CONTACTS
- CONCLUSION

INTRODUCTION

Under the IMP3 (2006-2020):

- Implementation of Mandatory Standards on selected steel products

INTRODUCTION

OBJECTIVE OF MANDATORY STANDARDS

- To ensure only products of acceptable quality are imported or locally produced;
- To protect the interests of local industries, consumers and environment; and
- Safeguard product quality, safety, technical standards to meet health, safety and environment requirements.
- To improve the image of the industry and the nation

IMPLEMENTATION OF MANDATORY STANDARDS

- 19th June 2003 - 4 Tariff Lines on Wire
- 15th Nov 2008 - 57 Tariff lines
- 1st August 2009 - 627 Tariff lines
- Review of 627 tariff lines, to include only critical tariff lines for the first phase of implementation
- Review was carried out after series of consultation with industries, MITI, SIRIM, CIDB and Customs
- 13th October 2009 - New Implementation Covers only 187 tariff lines.
- 1st Nov 2011 additional 6 tariff lines for aluminium

IMPLEMENTATION OF MANDATORY STANDARDS

- Importation enforcement under Customs Order (Import Prohibition).
- Importation must acquired **CERTIFICATE OF APPROVAL (COA)** issued based on testing and verification for standard compliances.
- Enforcement agencies/Issuance bodies:
 - CIDB for construction products; and
 - SIRIM QAS Intl. for non-construction & manufacturing products.

IMPLEMENTATION OF MANDATORY STANDARDS

CIDB Act 520 (AMENDMENT 2011) : Enforce mandatory standards on imported and local materials for usage in construction sector:

- Section 33C (1) : The Lembaga shall, in the manner determined by the Lembaga, certify the construction materials used in the construction industry and specified in the Fourth Schedule in accordance with the standard specified in the schedule
- Section 33D(1): A person shall not deal or undertake to deal. Whether directly or indirectly with the construction materials specified in the Fourth Schedule unless the construction materials have been certified by CIDB
- Section 33D(2) : Any person who deal or undertake to deal with the construction materials specified in the Fourth Schedule without the certification of the Lembaga shall be guilty of an offence and shall, on conviction, be liable to a fine of not less than RM 10,000 but not more than RM500,000

QUALITY CONFORMANCE CONTROL & ENFORCEMENT MECHANISM ON CONSTRUCTION PRODUCTS

PRODUCT STANDARD
CONFORMANCE

CIDB & CB

Importation
activities

CIDB & CB

Local
manufacturing
activities

PRODUCT
DISTRIBUTION

CIDB

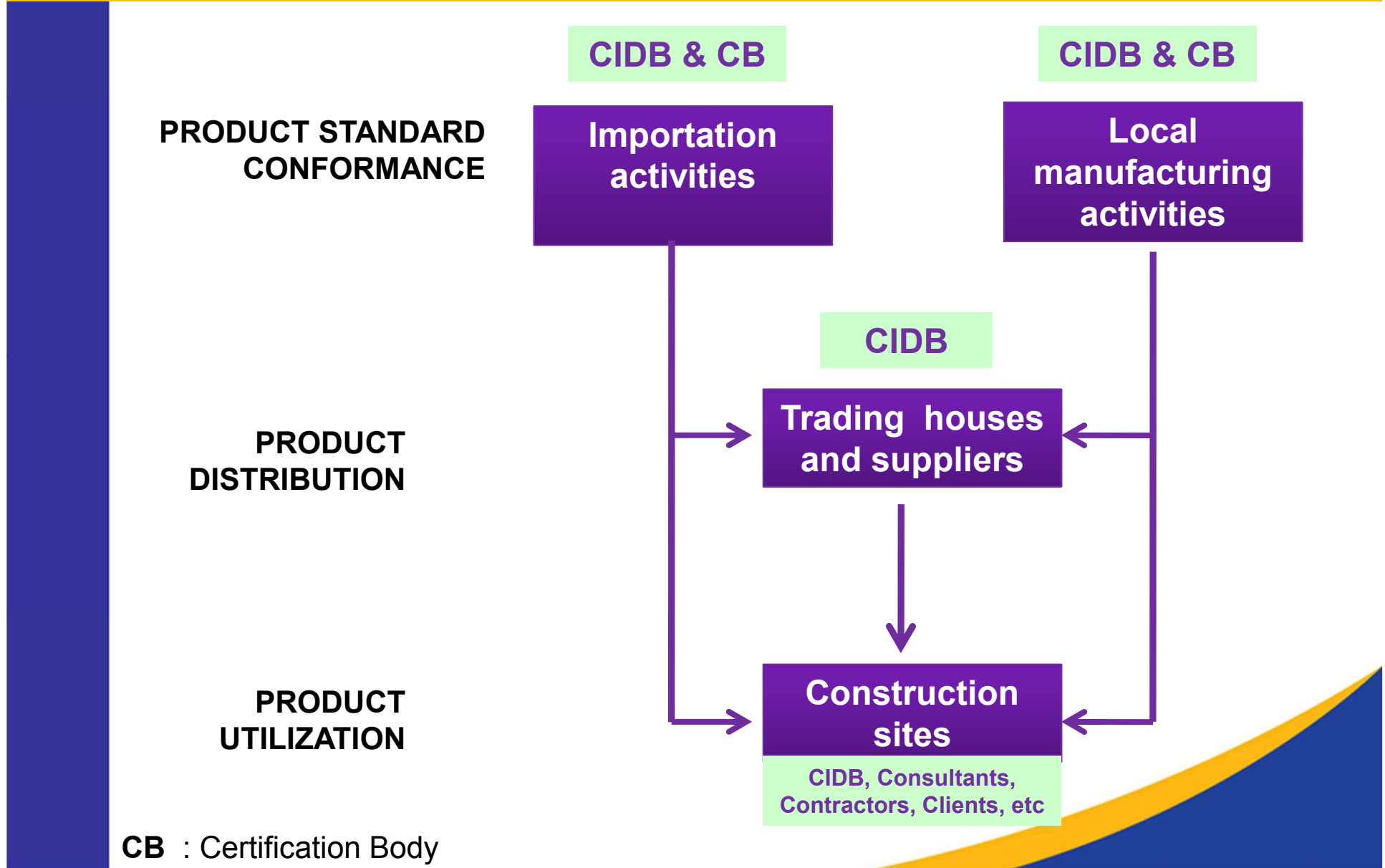
Trading houses
and suppliers

PRODUCT
UTILIZATION

Construction
sites

CIDB, Consultants,
Contractors, Clients, etc

CB : Certification Body



IMPLEMENTATION OF MANDATORY STANDARDS

LIST OF CONSTRUCTION MATERIALS & PRODUCTS TO BE ENFORCED (1ST PHASE) : SCHEDULE 4, ACT 520

LISTED (17 CATEGORIES)

- Sanitary Wares (Ceramic)
- Ceramic Tiles
- **Steel Frame Scaffoldings**
- Vitrified Clay Pipes & Fitting and Pipe Joints for drains and sewers
- **Cold Reduced Mild Steel Wires for Reinforcement of Concrete**
- Portland Cement
- Hydraulic Cement
- **Hot Rolled Steel Bars for Reinforcement of Concrete**
- Prefabricated Timber roof truss system
- **Hot Rolled Non Alloy structural steel section**
- Precast Concrete Piles for Foundation
- **Steel Wire Ropes for Lift**
- **Iron & Steel Products**
- Insulation Materials
- Float Glass
- MS 1064:2001 guide to MC in building

IMPLEMENTATION OF MANDATORY STANDARDS

To be Listed

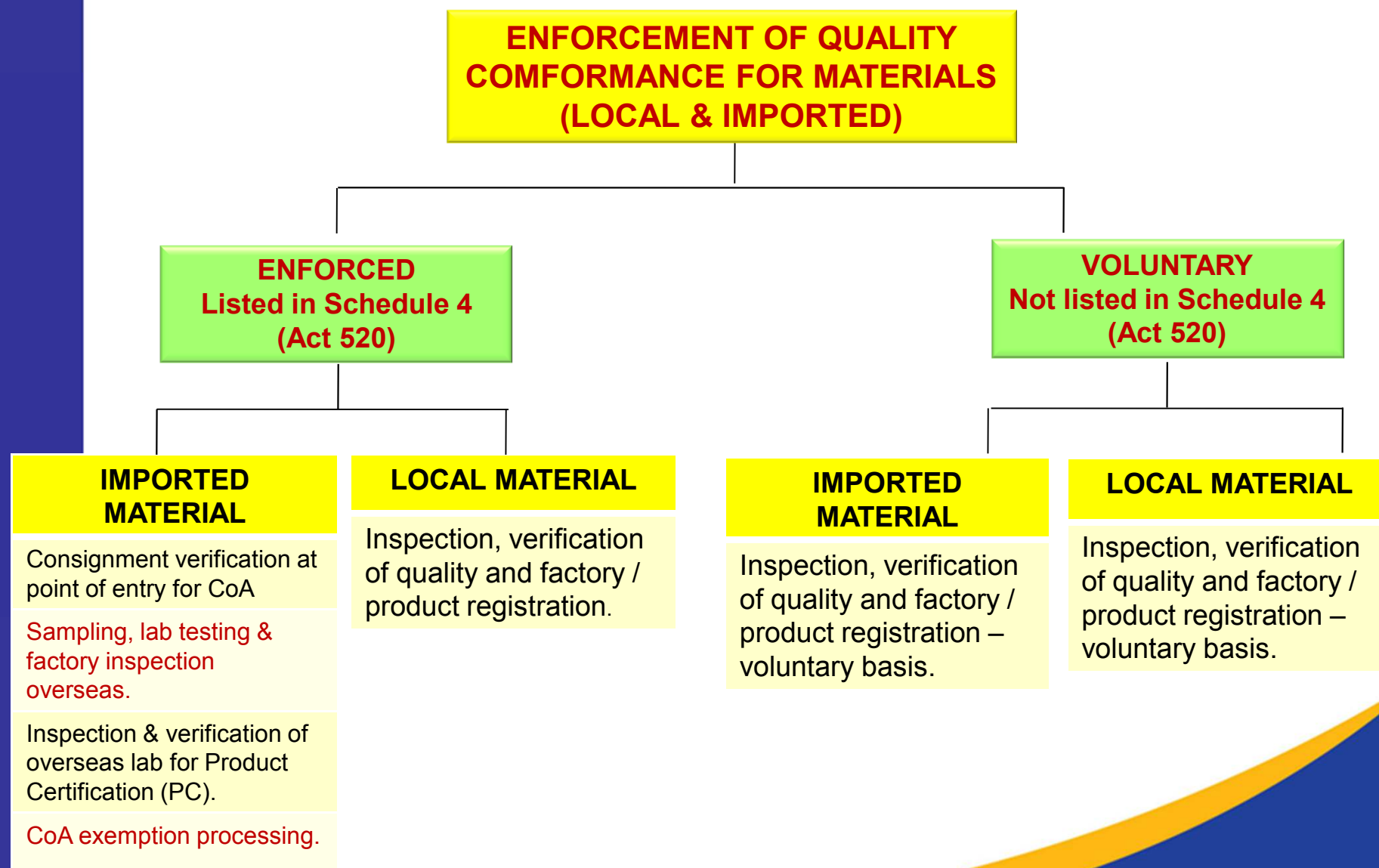
- Clear Float Glass
- Tinted Float Glass
- Reflective Glass
- Wired Glass
- Radiant Barrier
- Fibre Cement Flat Sheet

IMPLEMENTATION OF MANDATORY STANDARDS

NO	CONSTRUCTION MATERIALS & PRODUCTS	MALAYSIAN STD (MS)
1	Ceramic product * Ceramic Tiles * Clay Pipes and Pipe Fittings	MS ISO 13006 MS 1061, PART 1:1999
2	Sanitary Wares (Ceramic & Plastic)	MS 147/ MS 1522/ MS 795
3	Iron and Steel Product * Wire rods and steel bars * steel welded fabric * steel frame scaffoldings * wire rope for lifts * angle, shape and sections	MS 144, MS 146 MS 145 MS 1462 MS ISO 4344 MS 1490, MS 1491
4	Cement	MS 522, MS 888, MS1037, MS 1227, MS 1389, MS 1389, MS 1520, MS 1388, MS 794
5	Insulation Material	MS 1020:2010
6	Float Glass	MS 1135
7	Aluminum	MS 2040: 2007 MS 1848 : 2005

IMPLEMENTATION OF MANDATORY STANDARD

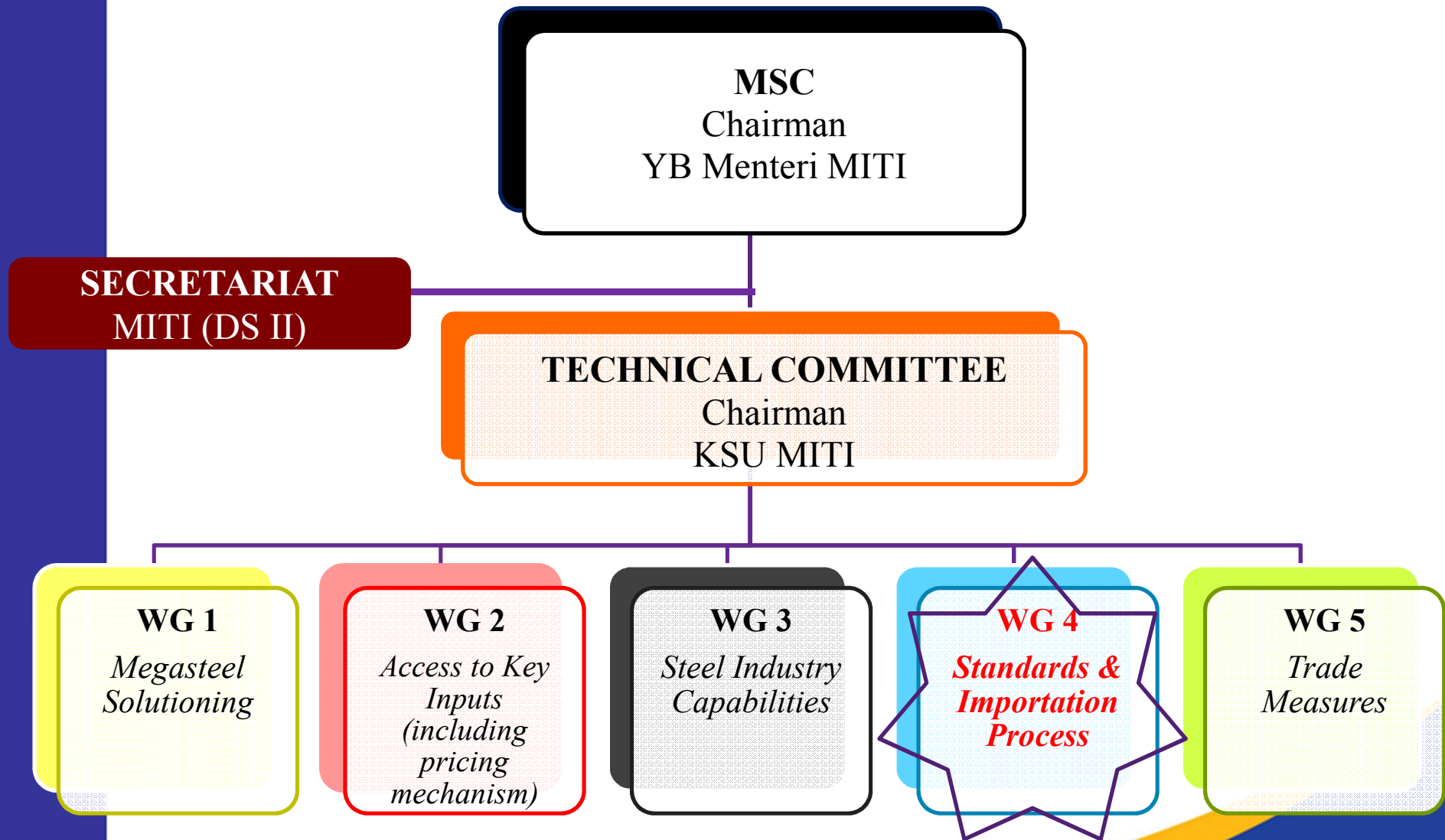
CIDB's IMPLEMENTATION CONCEPT (Construction Materials)



STRENGTHEN IMPORTATION PROCESS

- Boston Consulting Group (BCG) undertaken comprehensive study on the competitiveness of the local steel industry as well as to make recommendations to the ministry to develop an up to date plan for the future.
- Recommended government to focus on the enhancement of overall industry capabilities via the formation of Malaysian Steel Council

STRENGTHEN IMPORTATION PROCESS



STRENGTHEN IMPORTATION PROCESS

➤ **ENHANCING THE COA PROCEDURES**

The WG4 committee agreed

1. SQAS TO ABOLISH TEMPORARY COA (Normal Consignment with Special Condition)
2. SQAS/CIDB SHALL STREAMLINE THE IMPORTATION PROCESS
3. CARRY FULL TYPE TESTS
4. REVIEW TARIFF LINES FOR CONSTRUCTION AND NON CONSTRUCTION PRODUCTS

STRENGTHEN IMPORTATION PROCESS

1. SQAS TO ABOLISH TEMPORARY COA (Normal Consignment with Special Condition)

STRENGTHEN IMPORTATION PROCESS

MITI PRESS RELEASE 22ND JANUARY 2012

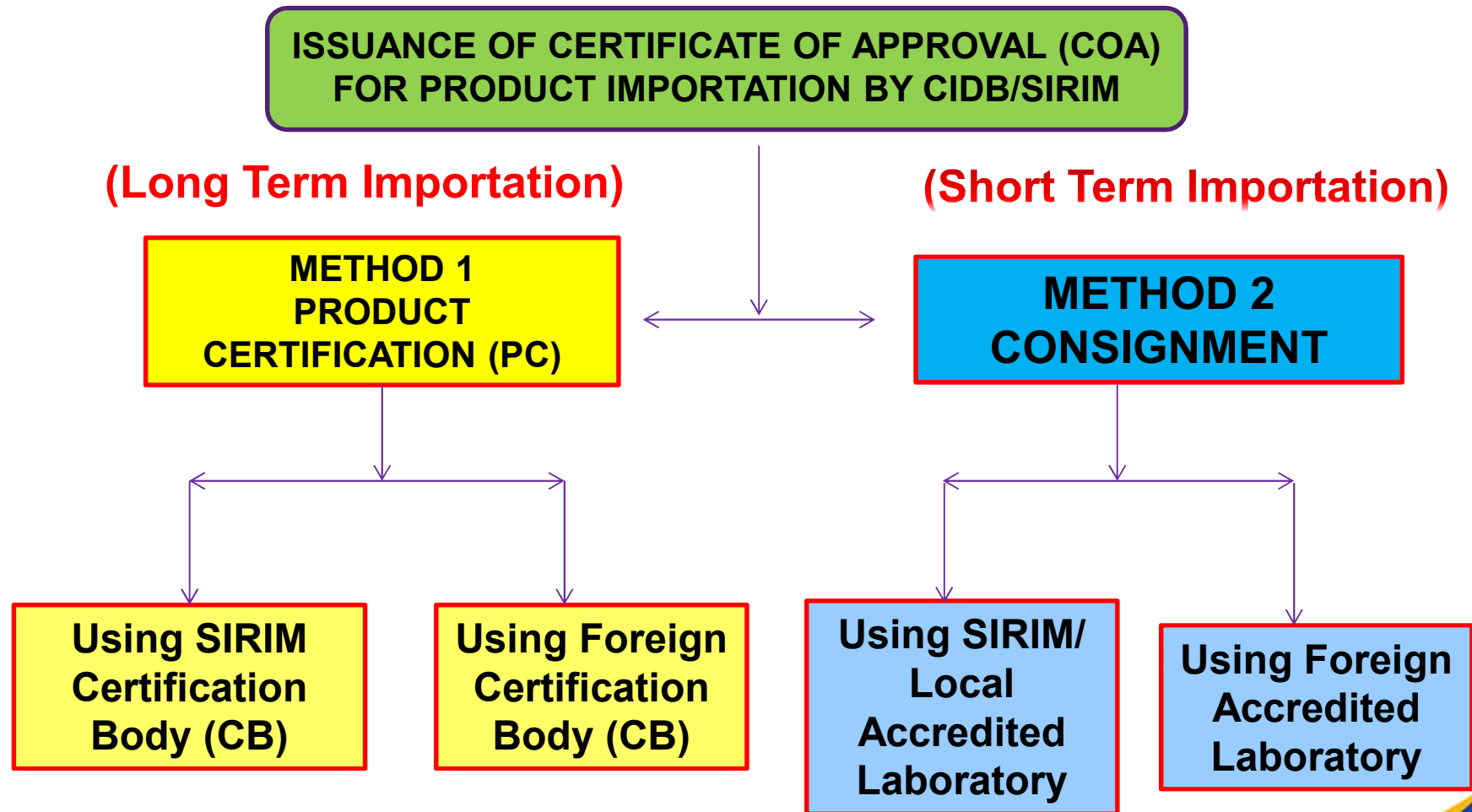
Dato Sri Mustapa said that Government approach will be to focus in the enforcement of mandatory standards to prevent below par products from entering market..

30 days from 22nd January 2013 the Government will cease the issuance of the Temporary COA and companies currently utilising TCOA may be considered for fast track clearance for a period of six (6) months..

STRENGTHEN IMPORTATION PROCESS

**2. SQAS/CIDB SHALL STREAMLINE
THE IMPORTATION PROCESS**

STRENGTHEN IMPORTATION PROCESS



APPOINT TESTING LAB SIRIM / LOCAL ACCREDITED LAB

SUBMIT APPLICATION

**SUBMIT ACCREDITATION CERT
ISO 17025 & SCOPE OF
ACCREDITATION**

**ARRANGE TO COLLECT
SAMPLE AT COUNTRY OF
ORIGIN/PORT**

**CONDUCT FULL TYPE TEST AND
ISSUE REPORT**

FTTR VALID 3-6 MONTHS

**SHIPMENT ARRIVED AT PORT OF
ENTRY**

**CONSIGNMENT VERIFICATION
AT PORT OF ENTRY**

**3 WORKING
DAYS**

ISSUE COA

APPOINT TESTING FOREIGN LAB (APLAC/ILAC MRA)

SELECT ACCR LAB & CONFIRM

**SUBMIT ACCREDITATION
CERT ISO 17025 & SCOPE OF
ACCREDITATION**

**ARRANGE TO COLLECT
SAMPLE AT COUNTRY OF
ORIGIN SIRIM/CIDB/TPIB**

**CONDUCT FULL TYPE TEST AND
ISSUE REPORT**

**SUBMIT ORIGINAL REPORT TO
SIRIM/CIDB**

**CONSIGNMENT VERIFICATION AT
PORT OF ENTRY**

**CONFIRMATORY/CRITICAL
TEST (IF BY TPIB)**

ISSUE COA

**3 WORKING
DAYS**



APPOINT CERTIFICATION BODY (SIRIM)

SUBMIT APPLICATION FOR PC



**CONDUCT ASSESSMENT AND
SAMPLING BY PC AUDITOR**



**CONDUCT FULL TYPE TEST FOR
PC**



ISSUE PC LICENCE



**CONSIGNMENT VERIFICATION AT
PORT OF ENTRY**



ISSUE COA

PC LICENCE VALID FOR
1 YEAR

3 WORKING
DAYS



APPOINT FOREIGN CERTIFICATION BODY (IAF/PAC MLA)

**SELECT FOREIGN CB &
CONFIRM**

FOREIGN CB SHALL BE
ACCREDITED TO ISO GUIDE 65
TYPE 5 CERTIFICATION

**CONDUCT ASSESSMENT AND
SAMPLING BY FOREIGN CB**

PC LICENCE VALID FOR 1
YEAR

FOREIGN CB ISSUE PC LICENCE

**ARRANGE FACTORY VISIT
FOR SIRIM/CIDB (1 TIME ONLY)**

SUBMIT PC LICENCE

3 WORKING
DAYS

**CONSIGNMENT VERIFICATION
AT PORT OF ENTRY**

ISSUE COA

OTHER METHODS OF IMPORTATION

CONSIGNMENT OF PATENTED MATERIALS

DOCUMENTS REQUIRED:

- BILL OF LADING/ AIRWAY BILL
 - PACKING LIST
 - INVOICE
 - MILL CERTIFICATE
- FULL TYPE TEST REPORT BY SIRIM
(VALIDITY 1 YEAR)
- AGREEMENT BETWEEN PURCHASER &
MANUFACTURERS
 - TECHNICAL SPECIFICATION
- **SAMPLE SHALL BE SELECTED BY SIRIM
/3RD PARTY INSPECTION BODY**

OTHER METHODS OF IMPORTATION

**METHOD 4 - CONSIGNMENT FOR
LOCAL SALES
(FROM BONDED
WAREHOUSE/FCZ/FIZ)
- WITH MASTER COA**

OTHER METHODS OF IMPORTATION

METHOD 5 - CONSIGNMENT WITH COA EXEMPTION

NO FULL TYPE TEST REPORT REQUIRED

OIL & GAS SECTOR : EXEMPTION BY CIDB

STRENGTHEN IMPORTATION PROCESS

IMPORTANT NOTES

**IMPORTERS SHALL ENSURE GOODS FULLY READY
PRODUCE FOR INSPECTION AND SAMPLING**

**IMPORTERS SHALL BE RESPONSIBLE FOR SAMPLE
CUTTING**

**CUTTING SAMPLES SHALL BE WITNESSED BY
SQAS/CIDB**

**SAMPLING FOR COILS SHALL BE DONE AT
FACTORY-DIMENSION**

**IMPORTERS/REP SHALL ASSIST DURING
DIMENSIONING TEST**

STRENGTHEN IMPORTATION PROCESS

3. CARRY FULL TYPE TESTS ON MATERIALS/PRODUCTS

STRENGTHEN IMPORTATION PROCESS

FULL TYPE TESTS

MECHANICAL TEST

Tensile Testing

Involves straining a test piece in tension, generally to fracture for the purpose of determining mechanical properties.

- Tensile
- Shear Strength
- Pull Out Test
- Slip Test
- Fatigue Test
- Compression



STRENGTHEN IMPORTATION PROCESS

MECHANICAL TEST

Hardness Testing

Hardness is the resistance to plastic deformation.

Determined by the ability of a material to scratch another, diamond being the hardest and talc the softer.



MICRO HARDNESS

Load range divide into two:

- Micro = 1 to 1000 grams
- Macro = above 1000 grams



ROCKWELL

- Major loads for the Standard Rockwell test are 60, 100, and 150 kg
- HRA, HRB and HRC
- According to ASTM E 18/ ASTM A 370



BRINELL

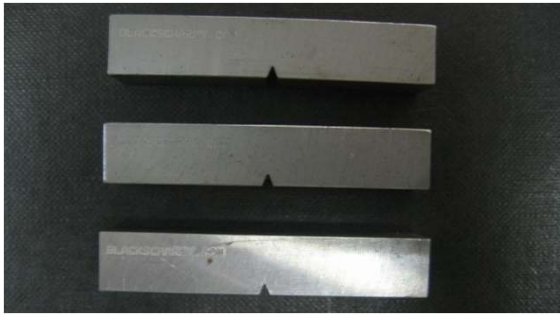
Load : Up to 3000 kg

Ball Indentor : 5 & 10 mm

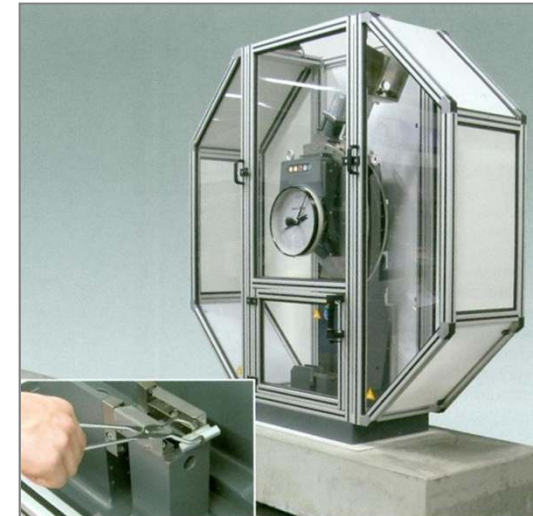
STRENGTHEN IMPORTATION PROCESS

MECHANICAL TEST

Charpy Impact Testing



CHARPY TEST SPECIMEN



Capacity:

- Up to 300 J
- In House specimen preparation
- According to BS 131 / ASTM A 370 / BS EN 10045-1/ AS 1544.2

STRENGTHEN IMPORTATION PROCESS

CHEMICAL COMPOSITION



**SPECTROMETER SHIMADZU
PDA-7000**



**WAVELENGTH DISPERSIVE
X-RAY FLUORESCENCE
SPECTROMETER**



**PORTABLE XRF
(ALPHA)**



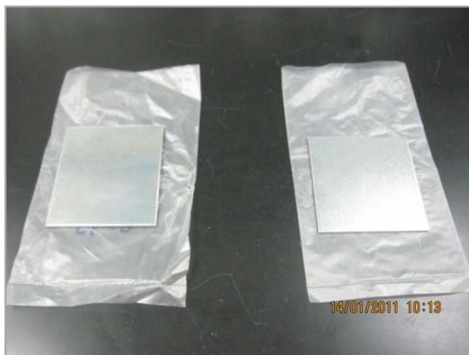
PORTABLE XRF (DELTA)

Elements analyzed:

- Carbon, Silicon, Manganese, Phosphorus, Sulphur, Nickel, Chromium
- Total Elements : 32 Elements

STRENGTHEN IMPORTATION PROCESS

COATING MASS TEST



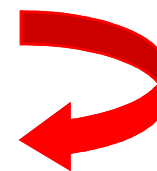
TEST SAMPLE



WEIGHTING TEST SAMPLE



EXTRACT COATING MATERIAL



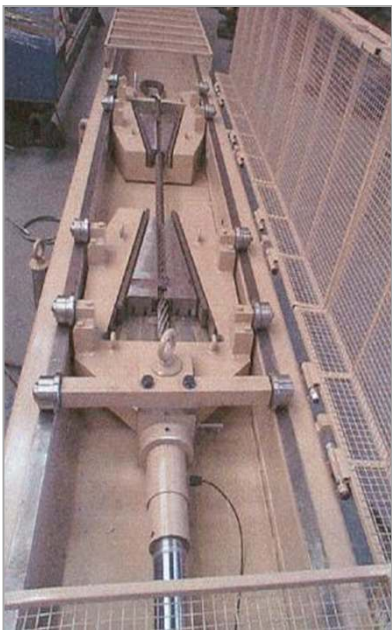
**COATING MATERIAL
EXTRACTED**



**WEIGHTING TEST SAMPLE AFTER
EXTRACTION OF COATING MATERIAL**

STRENGTHEN IMPORTATION PROCESS

TYPICAL PRODUCT (cont.) & TEST

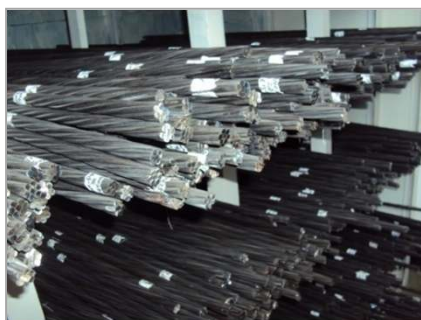


WIRE ROPE



MANHOLE COVER & FRAME

**BREAKING LOAD
TEST OF WIRE ROPE**



PC STRAND



BREAKING LOAD TEST



LOAD TEST

STRENGTHEN IMPORTATION PROCESS

DIMENSIONING ON SHEET COIL



STRENGTHEN IMPORTATION PROCESS

OTHER TESTS

- HYDROSTATIC
- EDDY CURRENT
- BONDING STRENGTH
- FATIGUE
- GEOMETRICAL PROPERTIES
- DUCTILITY
- ISOTHERMAL RELAXATION
- FLATTENING/BEND
- GRAIN SIZE
- DEPTH OF CARBURIZATION
- PRESSURE TEST
- TORSION
- FLARING



STRENGTHEN IMPORTATION PROCESS

<http://www.standardsmalaysia.gov.my>

https://www.ilac.org/members_contact_details.html

STRENGTHEN IMPORTATION PROCESS

4. REVIEW TARIFF LINES FOR CONSTRUCTION AND NON CONSTRUCTION PRODUCTS

IRON & STEEL AND ALUMINIUM PRODUCTS

NO.	HS CODE 2012			PRODUCT DESCRIPTION	COA ISSUANCE ORGANIZATION
	7207			Semi-finished products of iron or non-alloy steel	
				- Containing by weight less than 0.25% of carbon:	
1	7207	11	000	- - Of rectangular (including square) cross-section, the width measuring less than twice the thickness:	SIRIM
2	7207	19	000	- - Other	SIRIM
	7207 20			- Containing by weight 0.25% or more of carbon:	
3	7207	20	200	- - Containing by weight less than 0.6 % of carbon	SIRIM
4	7207	20	900	- - Other	SIRIM
	7208			Flat-rolled products of iron or non-alloy steel, of a width of 600 mm or more, hot-rolled, not clad, plated or coated	
5	7208	10	000	- In coils, not further worked than hot-rolled, with patterns in relief	SIRIM
				- Other, in coils, not further worked than hot-rolled, pickled:	
6	7208	25	000	- - Of a thickness of 4.75 mm or more	SIRIM
7	7208	26	000	- - Of a thickness of 3 mm or more but less than 4.75 mm	SIRIM
8	7208	27	000	- - Of a thickness of less than 3 mm	SIRIM
				- Other, in coils, not further worked than hot-rolled:	
9	7208	36	000	- - Of a thickness exceeding 10 mm	SIRIM
10	7208	37	000	- - Of a thickness of 4.75 mm or more but not exceeding 10 mm	SIRIM
11	7208	38	000	- - Of a thickness of 3mm or more but less than 4.75 mm	SIRIM
	7208 39			- - Of a thickness of less than 3 mm:	
12	7208	39	200	- - - Containing by weight less than 0.6% of carbon	SIRIM
13	7208	39	900	- - - Other	SIRIM
14	7208	40	000	- Not in coils, not further worked than hot-rolled, with patterns in relief	SIRIM
				- Other, not in coils, not further worked than hot-rolled:	
15	7208	51	000	- - Of a thickness exceeding 10 mm	SIRIM/CIDB
16	7208	52	000	- - Of a thickness of 4.75 mm or more but not exceeding 10 mm	SIRIM/CIDB

CONTACTS

SIRIM Shah Alam

Address	Building 22 SIRIM QAS International Sdn. Bhd. No.1, Persiaran Dato' Menteri 40700 Shah Alam Selangor Darul Ehsan
Tel. No.	03 – 5544 5851 (Pn. Raja Nor Siha Raja Abd Hanan – Section Head) 03 – 5544 5874 (En. Dalha Rahmat – Group Leader) 03 – 5544 5867 (En. Faiz Mohd Yusuf – Senior Technical Executive) 03 – 55446409 (En. Mohd Hamim – Head, Product Certification) 03 – 55446480 (En. Md Adha Rahmat – Product Certification)
Fax No.	03 – 5544 5186 / 5855 / 5886

CONTACTS (cont.)

SIRIM Shah Alam (Enquiry & Quotation)

Tel. No.	03 – 5544 5184 (Pn. Zaryatul Akma)
	03 – 5544 5032 (En. Sakuwan)
	03 – 5544 5182 (Puan Liana)
	03 – 5544 5031 (En. Dasuki)
	03 – 5544 5183 (En. Farizzul)
Fax No.	03 – 5544 5186
	03 – 5544 5855

SIRIM Shah Alam (Schedule for Verification & Inspection)

Tel. No.	03 – 5544 5187 (Pn. Sabrina)
	03 – 5544 5033 (Pn. Hayati)
Fax No.	03 – 5544 5186
	03 – 5544 5855

CONTACTS (cont.)

SIRIM Shah Alam (Verification & Inspection)

West Port	P.I.C. : En. Shukri Ibrahim Tel. No. : 03 – 3101 1455/1457 Fax No. : 03 – 3101 1453
North Port	P.I.C. : En. Zaim Tel. No. : 03 – 3176 1431/1435 Fax No. : 03 – 3176 1439

SIRIM Shah Alam (Testing)

Tel. No.	03 – 5544 5880 (En. Fahim) 03 – 5544 5180 (En. Azlan) 03 – 5544 5880 (Cik Syazana)
Fax No.	03 – 5544 5186 03 – 5544 5855

CONTACTS (cont.)

SIRIM Penang

Address	483, Mukim 6 Jalan Permatang Pauh 13500 Permatang Pauh Seberang Prai Pulau Pinang
Tel. No.	04 – 537 7435 04 – 538 4260
Fax No.	04 – 538 4261
P.I.C	En. Mohamad Zakaria En. Mohd Fairuz Ismail En. Mohd Haniff Abu Hassan En. Mohd Faisol Morat En. Saiful Nazri Ramlee

SIRIM Johor

Address	No. 3, Jalan Teknologi 5 Taman Teknoloogi Johor 81400 Senai Johor Darul Takzim
Tel. No.	07 – 599 8364 07 – 599 8367
Fax No.	07 – 598 7059
P.I.C	Tn. Hj. Ahmad Rumizi Jasmin En. Mohd Helmi Kamdari En. Mohd Ridha Noraship En. Shaiful Hisam Samat Pn. Zuraidah Padil

CONTACTS (cont.)

SIRIM Sarawak

Address	Lot 802 Taman Perindustrian Demak Laut Jalan Bako, Peti Surat 3292 93764 Kuching Sarawak
Tel. No.	082 – 439 052 082 – 439 054
Fax No.	082 – 439 060
P.I.C	En. Kasvenda Kasim En. John Melvin a/k Peter Pn. Norida Bujang

SIRIM Sabah

Address	Lot 1, No. 6 Jalan 1 KKIP Timur Commercial Zone 2 Kota Kinabalu Industrial Park 88460 Sabah
Tel. No.	088 – 497 048 088 – 497 082
Fax No.	088 – 496 357
P.I.C	En. Bonaventure @ Hamzah Abie En. Andy Azman Lantara

CONTACTS (cont.)

CIDB MALAYSIA	
Address	Tingkat 10, No 45, Menara Dato' Onn, Pusat Dagangan Dunia Putra Jalan Tun Ismail, 50480 Kuala Lumpur
Tel. No.	03-40477437 03-40477438
Fax No.	03-40477420
P.I.C	Puan Rohana Abd. Manan En Zulkefli Ismail

CONCLUSION

**THE IMPLEMENTATION OF THE MEASURES WILL
FURTHER ENHANCE THE INDUSTRY'S
COMPETITIVENESS AND HELP BUILD ITS
CAPACITY TO FACE CHALLENGES**

THANK YOU